



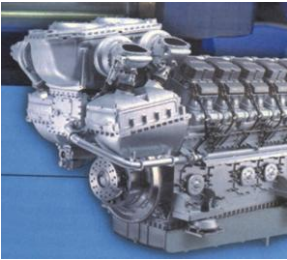
Gas Engine Oil

NATERIA MH 40



Low ash (<0.5%) detergent mineral oil for modern spark ignited gas engines.

PRODUCT PROFILE



Engine manufacturer

- Nateria MH 40 is high performance gas engine oil designated to meet the requirements of modern gas engine operating under heavy load and high temperatures. Nateria MH 40 is approved or meet the requirements of the following manufacturers:
- CATERPILLAR (3300 to 3500 series)
- CUMMINS (except B & C series)
- DEUTZ Power Systems
- IVECO-AIFO
- GE JENBACHER Technical Instructions 1000-1107
- MITSUBISHI
- PERKINS (Shewsbury, Stafford)
- WARTSILA (220 SG)
- WAUKESHA (VHP,AT)
- MAN M 3271-2
- MDE

APPLICATIONS

Spark ignited natural gas engines

- Lubrication of modern spark ignited engines fed with natural gas, when the manufactures require ash content between 0.35 % and 0.5 %. These engines are generally used in cogeneration (CHP: combined heat and power) power plants, gas compression etc.

ADVANTAGES

Longer Life & Protection

Catalytic converters compatibility

- Selective base oils with excellent oxidation & nitration resistance helps in
- Longer drain interval
- Optimum engine and component life.
- Speciality additive infusion helps in
- Clean engine components
- Wear protection of engine components like valve train.

TOTAL OIL INDIA PVT. LTD.

Head Office : 3rd Floor, The Leela Galleria, Andheri-Kurla Road, Andheri (E), Mumbai - 400 059. Tel. : 022 66407700 Fax : 022 66407720
Regional Offices : Chennai Tel. 044 28412790/28412823, Mumbai Tel. 022 25705775/6/7, Noida Tel. 0120 2516794/5/6, Kolkata Tel. : 033 66228200 / 8209

Date 01/12

All reasonable care has been taken to ensure that the information provided here is accurate as of date of printing. However due to continual product development, the information contained herein is subjected to change without notification. MSDS can be obtained from our local representative or can be down loaded from

www.quick-fds.com / www.total.co.in

- Low ash content in conjunction with excellent detergency provides required balance between valve train protection as well as required combustion chamber deposits.

Typical Characteristics	Reference Methods	NATERIA MH 40
Density at 29.5°C, kg/l	ASTM D 4052	0.872
Kinematic viscosity at 100°C, cSt	ASTM D 445	13.94
Kinematic viscosity at 40C, cSt	ASTM D 445	124.2
Viscosity Index	ASTM D 2270	110
Pour point, °C	ASTM D 97	- 21
Total Base Number, mg KOH/g	ASTM D 2896 (B)	5.68
Sulfated Ash	ASTM D 874	0.43
Flash point COC, °C	ASTM D 92	248

Above characteristics are mean values given as an information.

TOTAL OIL INDIA PVT. LTD.

Head Office : 3rd Floor, The Leela Galleria, Andheri-Kurla Road, Andheri (E), Mumbai - 400 059. Tel. : 022 66407700 Fax : 022 66407720
 Regional Offices : Chennai Tel. 044 28412790/28412823, Mumbai Tel. 022 25705775/6/7, Noida Tel. 0120 2516794/5/6, Kolkata Tel. : 033 66228200 / 8209

Date 01/12

All reasonable care has been taken to ensure that the information provided here is accurate as of date of printing. However due to continual product development, the information contained herein is subjected to change without notification. MSDS can be obtained from our local representative or can be down loaded from www.quick-fds.com / www.total.co.in